

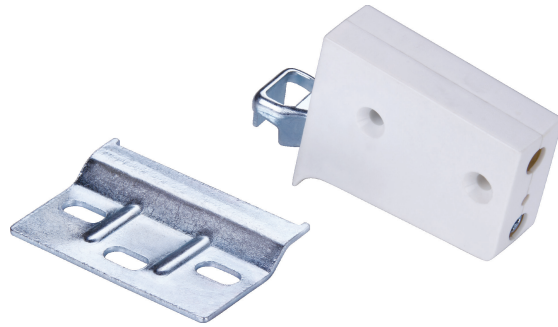
吊码系列 (明装) Cabinet hanging code series



产品描述 Product Description

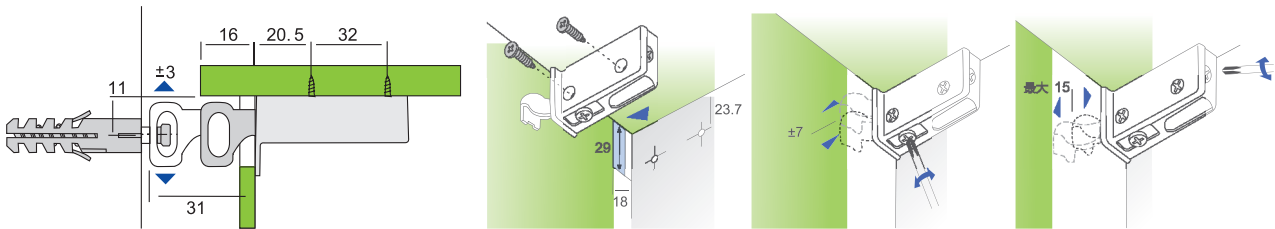
安装在背板后, 用于挂轨和挂钩
 额定载重 750 牛顿 / 个
 背板厚度从 16mm 起, 深度调节
 25mm
 调节功能高度 : ±9mm

Install in the back of the back panel, use for hanging
 track and hooks.
 Rated load of 750 N / a
 Backplane thickness from 16mm, the depth
 adjustment 25mm
 Regulatory function of height: ± 9mm

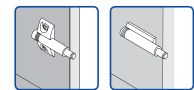


订货号 : **MY501**

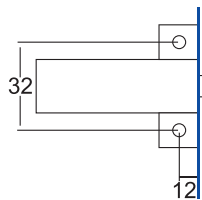
安装图 Installation



反弹器 Rebound device



订货号 : **MY402**



订货号 : **MY404**

