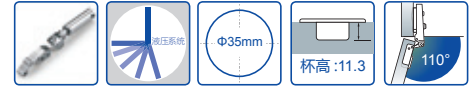


MX03 不锈钢液压系列 (固装)

Hydraulic stainless steel series (indivisible)



产品描述

Product Description

开启角度：110 度
 门可选用板厚度：14-26 毫米
 面板尺寸 (K)：3-7 毫米
 铰杯高度：11.3 毫米
 铰杯直径：35 毫米
 铰杯两孔距离：48 毫米

Open degree: 110°
 Range of doors thickness: 14-26mm
 Height of hinge cup: 11.3mm
 Diameter of hinge cup: 35mm
 Diameter of door (K): 3-7mm
 Distance of two hole center: 48mm

应用实例

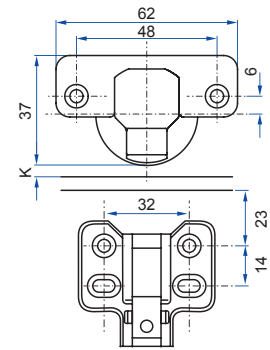
Applied Instance

H= 安装板高度
 K= 门板外线与铰链杯钻孔距离
 D= 侧板上所需盖位
 A= 门与侧板的间隙
 L= 面板内线侧边外线距离

H=height of mounting plate
 K=drilling distance from the edge of door to the edge of the hole
 D=required door overlay
 A=gap between door and side panel
 L=gap between door and carcase

安装尺寸

Installation Dimension



型号对照 Model Comparison

订货号: MX0309	H=0 D=19 K=5	底板高度 H mm	铰杯距离 K mm	盖位 D mm	铰链底座高度 H=14+K-D
直臂 Full overlay (全盖门)	H=0 D=10 K=5	3 4 5 6 7	3 4 5 6 7	17 18 19 20 21	H=5+K-D
				15 16 17 18 19	
中曲 Half overlay (半盖门)	H=0 A=1 K=5	3 4 5 6 7	3 4 5 6 7	8 9 10 11 12	H=-2+K-A
				6 7 8 9 10	
大曲 Insert (内嵌门)		3 4 5 6 7	3 4 5 6 7	-1 -2 -3 -4 -5	
				1 0 -1 -2 -3	